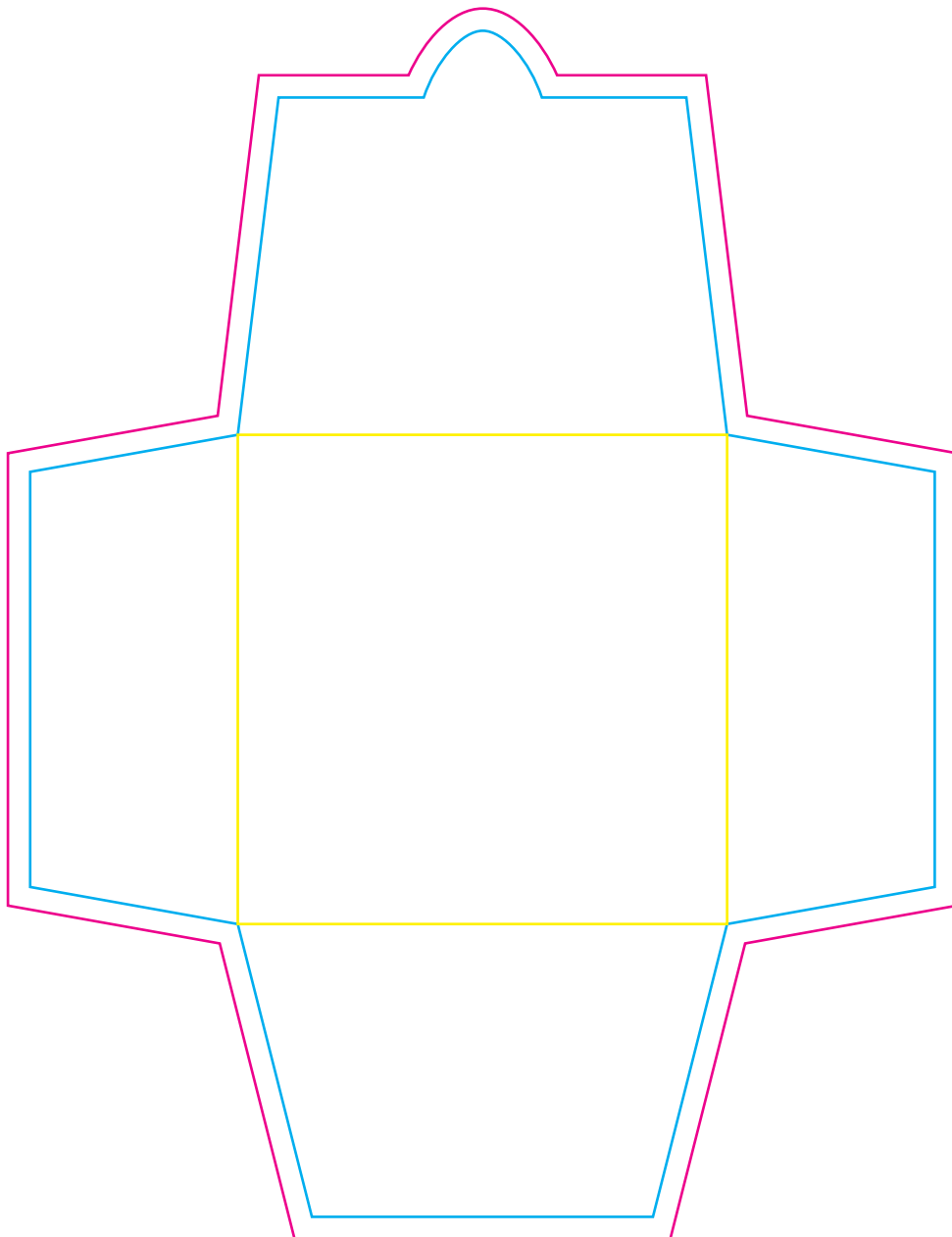


The cyan keyline indicates the cutter, this is the finished size of the product.

The magenta keyline indicates the 3mm bleed that must be applied all round the design, all colours and images must extend to this line

The yellow square in the middle shows the visible face of the wallet when it is folded and assembled

Please remove the coloured lines from your finished artwork.



Text/images may be applied to the side flaps, although the customer should be aware that these fold inside and are not visible until opened.

Text to appear on the back should be placed upside down on the top section (section with tab). Do not print on the bottom section as this is also covered when assembled.